



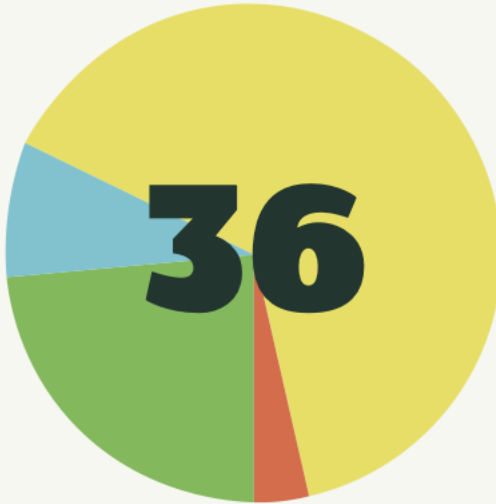
GEAUX FAR LOUISIANA

is comprehensive plan and associated policy agenda for the transformation of Louisiana's early childhood systems with parents, providers and racial equity at the center.

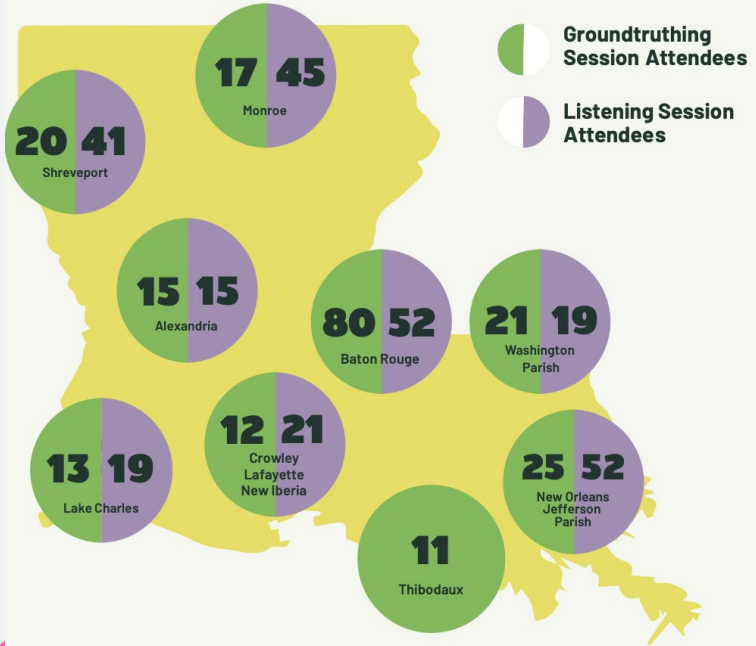
MEET THE STEERING COMMITTEE

The **Geaux Far Louisiana Steering Committee** was designed to reflect the regional, racial, and ethnic diversity of Louisiana, as well as a commitment to racial and social justice.

- 13** Louisiana Parishes Represented
- 9** Full Group Meetings
- 2** Steering Committee Retreat
- 8** Working Group Meetings



- 65% Parents**
- 23% Providers**
- 8% Business Owners / Leaders**
- 4% Elected Officials System Leaders**



Our work was informed by a community engagement process led by the Power Coalition for Equity & Justice and included:

- 13** Listening Sessions Across Louisiana Spring 2022
- 306+** Listening Session Attendees
- 11** Groundtruthing Sessions in July and August 2022
- 264** Groundtruthing Session Attendees
- 510** Online Survey Participants



Geaux Far Louisiana Strategic Plan

2023 - 2028







Goal 1: A Family and Provider-Driven System

Families and providers are engaged and prioritized in leadership and decision-making throughout the state's early childhood system.



Formal Decision-Making Structures

Effective Government-Family-Provider Partnerships

Early Childhood Leadership



Goal 2: A Net that Works

All families have access to an informed, accessible & inclusive, culturally competent and well-coordinated network that helps them meet their basic needs and support child development.



Informed, Supported Families

Accessible, Coordinated Systems



Goal 3: A Healthy Start

All families receive family-centered, comprehensive, whole-person physical and mental health care from pregnancy to age five.



Universal Health Care Access and Availability

Support for Parents Through the Early Years

Improved Quality of Health Care and Providers



Goal 4: Child Care for Everybody, Everywhere

All families have equitable access to affordable high-quality early care and education that is well-funded and responsive to the needs of families, children, and the educators and providers who make it possible.



More Affordable, Responsive Child Care Options

High-Quality Early Learning Programs

Competitively-Compensated Early Care and Education Workforce



Goal 5: Family-Friendly Workplaces

All employers in Louisiana have family-friendly policies that support employees with prioritizing the well-being of their children.



Infant and Toddler Feeding Supports

Workplace Supports



Libbie Sonnier, Ph.D.

Co-Chair, Geaux Far Louisiana Steering Committee
 Executive Director, Louisiana Policy Institute for Children
Isonnier@policyinstitutela.org

Rochelle Wilcox

Co-Chair, Geaux Far Louisiana Steering Committee
 CEO, Wilcox Academy of Early Learning
 Co-Founder, For Providers By Providers
 Louisiana's 2022 Early Learning Leader of the Year
Rochelle@wilcoxacademyelc.com



www.GeauxFarLA.org

info@geauxfarla.org